

Date: August 28, 2022

Subject: TR3B, TR4 AND SR72, ASP HIGH PERFORMANCE FLYING MACHINES

The TR type craft are driven by an engine which uses changes in gravity to allow the craft to move instantly in any direction without destruction to the craft itself. To help make things clear we will begin with the basic operation of the gravity well engine (anti-gravity engine so to say).

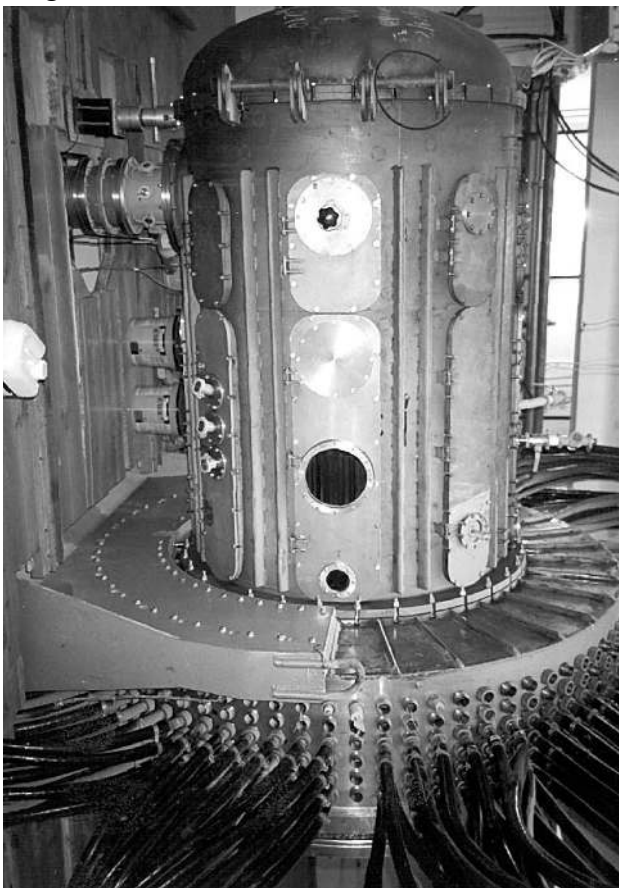
- 1 The central part of the engine is a large high performance centrifuge which operates as the center of the gravity well engine. It is called the “gravity well engine” because it distorts the gravity field around the engine and extends outside the craft. When the people enter the craft, they are at gravity x (a numeric value), and for the duration of the time the inside of the craft with the engine on, that is what the gravity will be inside the craft.
- 2 How it operates: The engine manipulates the gravity field surrounding the craft which allows it to hover, or dive or move suddenly in any direction. The craft are also able to operate underwater and to jump to space as well. When you are inside the craft you do not feel any sudden changes in g forces when the craft shifts suddenly, because the inside of the craft is maintained at a fixed gravity level.
- 3 The basic operation of the engine is as follows:
  - 3.1 There is an ultra high speed centrifuge which spins a mixture of mercury and thorium. When the mercury (which is NOT consumed) is spun at high speed like 200,000 RPM in a magnetic field, it begins to create a gravity distortion which surrounds the craft and allows the craft to quickly move relative to the world outside the gravity well created by the engine.
  - 3.2 The thorium being the fuel is slowly consumed and must be replaced but the mercury is not consumed rather it is what induces the gravity field changes. As the slurry in the centrifuge is spun the following things happen:
    - 3.2.1 A VERY HIGH DENSITY LOW ENERGY NEUTRON FIELD (WHICH CHANGES DNA AND MOST PEOPLE DIE FROM EXPOSURE TO IT BUT THE ENTITIES YOU KNOW AS THE GREYS SURVIVED THIS RADICAL DNA CHANGE), BECAUSE THEY SURVIVED, TO THIS DAY THEY PILOT SOME VERY TINY CRAFT IN WHICH THE ENGINE CAN NOT BE FULLY SHIELDED BUT SINCE THEY ARE GREYS ALREADY NOTHING MORE WILL CHANGE. THE TR3B AND TR4 AND LARGER CRAFT ARE FULLY SHIELDED FROM THE NEUTRON FIELD.
    - 3.2.2 THE CENTRIFUGE ALSO GIVES OFF A GRAVITY FIELD WHICH CAN BE PRECISELY CONTROLLED WHICH GIVES THE CRAFT LARGE AND SMALL THE ABILITY TO ACCELERATE AND STOP AND SUDDENLY TURN AND TO DO WHAT LOOK LIKE IMPOSSIBLE MANEUVERS TO OBSERVERS ON THE OUTSIDE.
- 4 IF THE TR TYPE CRAFT ARE SO FLEXIBLE IN THEIR MOTIONS WHY DO THEY CRASH AT TIMES ?

4.1 THE TR TYPE CRAFT FLY BY MANIPULATION GRAVITY IN A LOCALIZED AREA. BECAUSE THE GRAVITY FIELD OF EARTH IS NOT PERFECT AND HAS PLACES WHERE THE GRAVITY IS DIFFERENT, THIS CAN THROW OFF THE CRAFT AND PUT IT INTO A SPIN OR CRASH DEPENDING ON THE CHANGE IN GRAVITY AND HOW IT RELATES TO THE CRAFT.

4.2 FOR THE REASONS STATED ABOVE IT IS ESSENTIAL THAT ALL TR TYPE CRAFT HAVE CURRENT AND UPDATES GRAVITY MAPS OF THE EARTH IF THEY PLAN TO FLY MISSIONS GLOBALLY.

5 BECAUSE EACH CRAFT IS FALLEN ANGEL DESIGNED AND BLESSED BY LUCIFER HIMSELF, AND BECAUSE THERE IS A RING OF GLYPHS AROUND EACH CRAFT PRAISING LUCIFER, A TRUE BELIEVER IN JESUS WILL NOT BE ABLE TO ENTER SUCH A CRAFT.

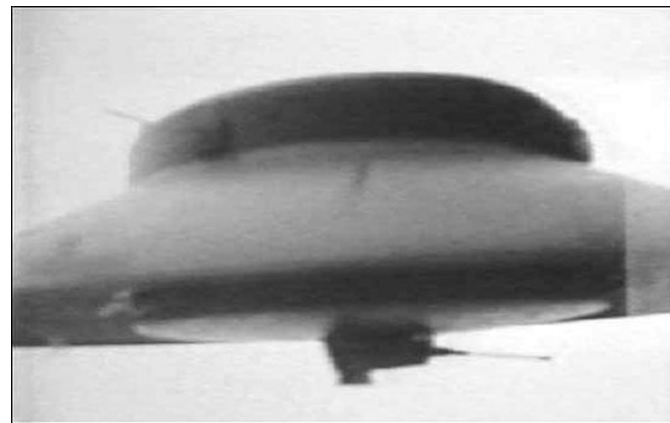
6 Some images of the craft from the time of ww2 and the deep nazi interaction with the fallen angels.



A test version of the engine in a lab



NAZI BELL FLYING MACHINE LIKE A VIMENA



One of the early versions of a nazi craft

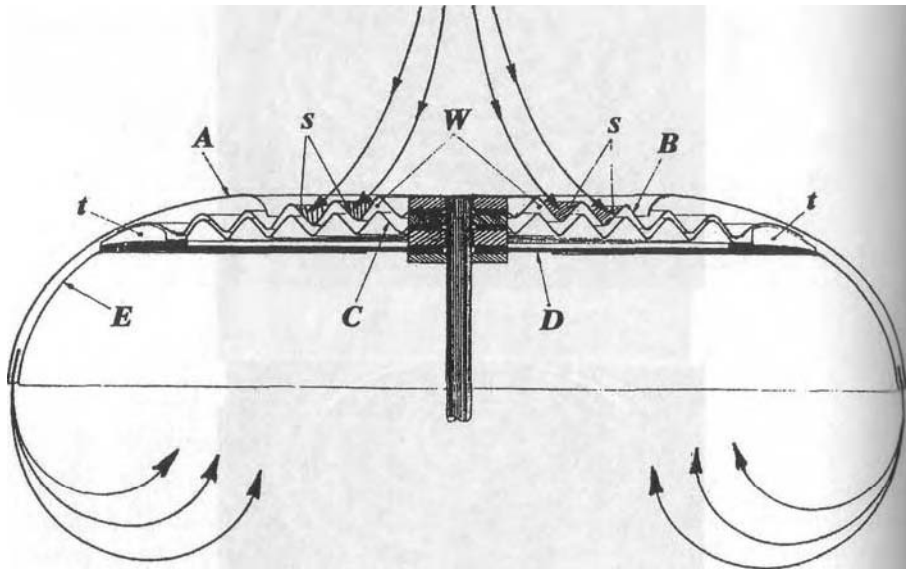
## HOW THE TR TYPE CRAFT WORK



TR3B PLASMA GLOW JUST BEFORE IT CLOAKS



The image on the right shows clearly the plasma interaction with the atmosphere as the craft is doing 3 things at the same time: First it is changing gravity zones on the earth which requires an energy change to the gravity field of the craft. Second the craft is making a tight high speed turn and also turning on the cloaking system which causes the abundance of plasma glow in the photo. During operation, as the gravity level of the earth changes under the craft, it requires instant response from the TR craft control system if the craft is to remain flying in normal conditions and not crashing. It is for this reason that the gravity details of earth are totally mapped fresh every 7 days because during a 7 day period radical gravity changes have not been noticed.



To avoid getting into a complex technical discussion about how the aircraft move I will use this image to show how the altering of the gravity causes the air to flow over the craft creating the final amount of lift because the vortex engine only removes about 85% of the gravity to save energy then it is air pressure that provides the final amount of lift as well as the motion in the desired direction. The image also shows why the vortex engine sits in the center of the craft so that the control of air or water flow ( if underwater)is balanced at the center of the craft.

## **NON GRAVITY WELL BUT SIGNIFICANT AIRCRAFT IN THE SECRET BLACK DOMAIN**

Aside from the TR series of aircraft there are some other important and formidable aircraft being built in secret. What we do know gives us hints about the operational behavior of the planes. Some of these planes were or are being built just to test things, others are scheduled to go into limited production.

**1 SR72: THIS IS “SON OF SR 71” BUT IS DESIGNED AS AN UNMANNED AIRCRAFT TO CRUISE AT MACH 6 AT 124,000 FEET WITH A 12,000 MILE RANGE. THERE ARE BUDGET RUMORS OF A MANNED VERSION SCHEDULED TO BE FLYING BY 2025.**

**2 AURORA: THIS IS AN EXPERIMENTAL AIRCRAFT DESIGNED TO FLY AT MACH 6 TO MACH 12. IT IS A TEST BED FOR A ROTATING PULSE DETONATION ENGINE WITH A GOAL OF REACHING 50% FUEL EFFICIENCY AT FULL SPEED.**

**3 DARK STAR: FIRST BUILT IN THE 1990’S AS A VERY HIGH ALTITUDE LONG ENDURANCE UNMANNED SPY PLANE. THE PROGRAM CLAIMS TO HAVE BEEN CANCELED BUT THERE ARE STILL ACTIVELY BEING SPOTTED IN THE AIR BOTH AROUND AREA 51 AS WELL AS UK SUPPORT AIR BASES.**



CONTRAIL FROM A  
PULSE  
DETONATION  
ENGINE



CONTRAIL FROM A ROTARY  
PULSE DETONATION ENGINE

Pulse detonation engines are of interest because they have 50% improved fuel efficiency over other engine types. A pulse detonation engine is simply like mixing the fuel and air into a closed tube and the explosion pushes the hot gases out the back for thrust.

## **Epilog**

An interesting note regarding gravity well craft is that there is a group of craft from ancient India called the Vimana flying machines. We will be doing an in depth report on these flying machines as well. The nazis studied all they could about the Vimana flying machines before they began their efforts on their own flying machines.

As the evil in the world increases our only salvation, protection, authority and hope comes from Jesus the Lord of Lords and over all because he conquered spiritual and physical death.



